



## <Attention>

Please do not open the cover when the inhaler is not in use to avoid wasting the medicine.

### How to read the counter

Please check the number displayed by the counter

30

The counter indicates the number of doses remaining. Before starting to use the inhaler, the counter indicates the maximum number\* of doses available.

9

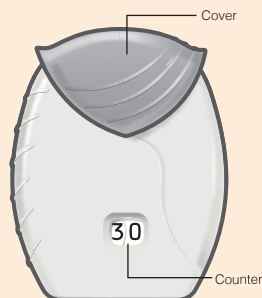
When the number of doses remaining is "9" or less, the left half of the counter becomes red.

0

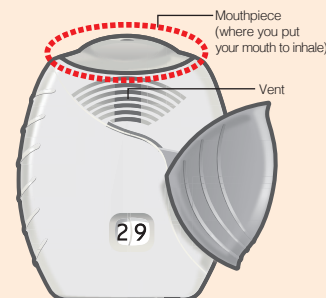
If the cover is opened after the counter has indicated "0", the counter becomes completely red.

\*There are 3 types available ("7", "14", and "30")

### When the cover is closed



### When the cover is open



- There are 3 types of Ellipta – 7 doses, 14 doses, and 30 doses. Please check before use.
- There is no 7 doses type for Trelegy, Relvar, and Arnuity.
- There is no 14 doses type for Anoro, Encrusa, and Arnuity.
- Please refer to the drug information for each drug before use.

### Dosage and administration

Please follow the instructions of your doctor.

Please inhale **one dose once a day**

(at the same time of day if possible).

### Precautions

- Retrieve the inhaler from its package just before use.
- Use the Ellipta inhaler within 6 weeks after opening the package. If any medicine remains after that time, discard the inhaler and do not keep it.
- Store the inhaler at room temperature, away from heat and moisture.
- When you open the cover, you may feel resistance (friction) or hear a squeaking noise. This is the sound made by the medication being dispensed inside the inhaler, and does not indicate a problem.
- Do not shake or tap the inhaler after you open the cover and before you inhale the medicine.

**Please read the instructions on the back of this sheet before you use the inhaler.**

### Frequent Q & A

#### Q. What happens to the medicine if I open the cover by mistake?

**A.** Every time you open the cover, 1 dose of the medicine is dispensed. If you close the cover without inhaling the medicine, it will be stored inside and you cannot use that dose again. When you open the cover the next time, a new dose of medicine is dispensed, so you will not inhale two doses.

#### Q. What should I do if I forget a dose?

**A.** If you forget to inhale a dose at the normal time, inhale a dose immediately when you remember. Even if you completely forget to inhale a dose, do not inhale more than once a day and do not inhale 2 doses at once.

#### Q. How does it feel to inhale a dose?

**A.** When you inhale the medicine, you may notice a slight sweet/butter taste or feel powder in your mouth. Since the amount of medicine is very small, you may not notice it (you may feel that you have not inhaled the medicine). You may also not notice it depending on your condition. If you are not sure that you inhaled correctly, inhale 1 – 2 times more without closing the cover.

#### Q. How should I discard the inhaler?

**A.** The outer container is made of plastic, and there is an aluminum sheet inside. Do not take the inhaler apart, and follow the local waste disposal laws when discarding it.

You can watch a video showing how to use the Ellipta inhaler on your computer or smartphone. The narration is in Japanese.

▶ <https://kusurigsk.jp>

If you cannot scan the QR code, enter the URL above manually online.

The narration is in Japanese.



For inquiries about the Ellipta inhaler:

**Customer Care Center**

**TEL: 0120-562-306**

(9:00 – 17:45 / except on Saturdays and Holidays and company holidays)

Please note that our customer care center only handles inquiries in Japanese.

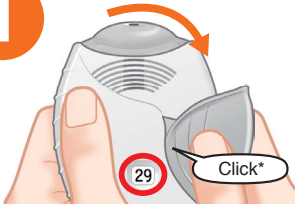
# How to use Ellipta Inhaler



**<Attention>**

Please do not open the cover when the inhaler is not in use to avoid wasting the medicine.

1



**Slide the cover down until you hear a 'click\*'**

The inhaler is ready to use. Make sure that the number on the counter has decreased by one.

If you open the cover and close it again without inhaling a dose, that dose cannot be inhaled later.

\*The "click" may not be heard well when the cover is opened, but the medicine is ready if the counter decreases by one.

2



**Breathe out**

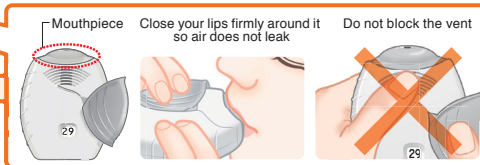
Breathe out as much as you can comfortably.  
Do not breathe on the mouthpiece.

3



Put the mouthpiece between your lips, and  
**take one long, deep breath in.**

Breathe in strongly and draw the air deeply into your lungs.

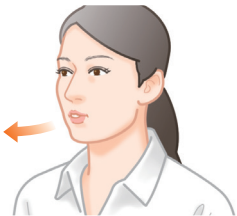


4



**Remove the inhaler from your mouth and hold your breath for at least 3 – 4 seconds.**

5



**Breathe out slowly, and then breathe as usual.**

Close the cover of the Ellipta inhaler when you have finished.

6



**Gargle and rinse your mouth with water after inhaling.**

Some patients may have a sweet/bitter taste when inhaling. Rinse out any medicine remaining in your throat and mouth. Gargling can prevent adverse drug reactions.